



SEE ADLER



70'3" (21.4 m) HINCKLEY Sou'wester 70 Pilothouse Ketch

LOA: 70'3" (21.4 m) Year: Mfg-1998 Model-1998
Beam: 17'6" (5.3m) Mfg: HINCKLEY
Draft: Min 7'6" (2.3 m) Max 17'6" (5.3 m) Type:
Speed: 8.5 knots / 9 knots
Location: Tahiti (French Polynesia) South Pacific
Telephone: 00689+ 87331961
Email: see.adler.sy@gmail.com

HINCKLEY SOUWESTER 70' (70'3") PilotHouse

Year	Length	Beam	Draft	Location	Price
1998	70'3"	17'6"	6'6"	Outside United States	US\$1,850,000 *

Description:	SEE ADLER is a beautiful Hinckley Souwester 70 center cockpit enclosed pilothouse ketch with teak decks and hydraulic stoway main and mizzen masts. Her first-class varnished raised panel cherry interior with all the amenities, sleeps 8 in comfort and features salon areas in the pilothouse as well as below decks. Built for a very knowledgeable sailing family, she has been thoughtfully appointed in classic style with all the amenities (plus more) and provides the wonderful sailing and cruising experience for which Hinckleys are famous.
--------------	---

Equipment:	<p>Full Navigation Station, .Robertson AP300 autopilot (2 cylinders) with KVH gyro-rate compass and main panel at NAV station and remote control, .Northstar 951XD differentia GPS with 112 sensor and interfaced to computer, autopilot, plotter, Ockam instruments an radar, .Raytheon</p> <p>C/70 GPS/Chartplotter .Raytheon R40XX Radar (Nav station) also displays chartplotter - 4-kw antenna on mizzen mast. SEA 23</p> <p>5 SSB with AT-120 tuner with remote and insulated backstay .Icom 127 VHF with DSC - (hailer abd fog speaker on mizzen mast) Nav station Standard Horizon GX2355S VHF</p> <p>.Satellite phone system with fax capabilities - Trane and Trane TT 3064A Mini AT system</p> <p>.Panasonic KX-TG23-86 cordless 900-mhz phone/answer machine-Nav Station</p>
------------	--

Location: TAHITI FRENCH POLYNESIA
SOUTH PACIFIC, Outside United States

Material	Hull	Type	Rigging	Cabins	Condition
fiberglass	monohull	cruiser	ketch	4	good

* Negotiable price or Best offer

Additional Specifications For SEE ADLER :

LOA:	70'3" (21.4 m)	Year:	Mfg-1998 Model-1998
Mfg. Length:	70'3"(21.4m)	Mfg:	HINCKLEY
LWL:	52'4" (16 m)	Model:	Sou'wester 70 Pilothouse
LOO:			Ketch
Beam:	IT'S" (5.3 m)	Type:	
Draft:	Min 76*(2.3m)	Rig:	Ketch
	Max 17^" (5.3 m)	Cockpit:	
Hull Mtrl:	Composite	Speed:	8.5 knots / 9 knots
Hull Cnfg.:	Keel-Centerboard	Engines:	1xCummins
Hull Designer:			6BTA5.9 M1
Deck Mtrl:			220 HP, 4262hrs
Disp:	105000 (47627.7 kg)	Engines Year:	1998
Ballast Weight:	31160(14134.1 kg)	Staterooms:	3
Ballast Type:		Sleeps:	
Range:		Heads:	
Int Designer		Crew Quarters:	1
Ext Designer		Crew Berths:	
Fuel Cap:	440 g (16651)	Captain Cabin:	No
Water Cap:	350 g (13251)	Price:	
HolcHng Tank:			
Flag:	USA		
Classifications:	Unknown		
Class Type:			
MCA:			
ISM:			
Location:	Papeete, Tahiti, French Polynesia		

INTRODUCTION:

SEE ADLER is a beautiful Hinckley Sou'wester 70 center cockpit enclosed pilothouse ketch with teak decks and hydraulic stoway main and mizzen masts. Her first-class varnished raised-panel cherry interior with all the amenities, sleeps 8 in comfort and features salon areas in the pilothouse as well as below decks.

Built for a very knowledgeable sailing family, she has been thoughtfully appointed in classic style with all the amenities (plus more) and provides the wonderful sailing and cruising experience for which Hinckleys are famous.

HULL and DECK



- Flag Blue Awlgrip topsides
- Off-white Awlgrip cabin sides
- Teak deck and cabinhouse top
- Gold leaf cove: Cove stripe, name and hail.
- Vivid red/Flag blue/Off-white/Flag blue boottop
- Red bottom - Two coats red, over 1 coat black - all Micron CSC
- Varnished exterior teak trim

Construction:

- Hull: Hand laid, balsa-core sandwich construction with vinylester resin and Kevlar/E-glass on inner and outer skins.
- Deck: Infusion molded, balsa-core sandwich construction with vinylester resin and Kevlar/E-glass on inner and outer skins.
- Bilge areas - White gelcoat finished
- Wooden plugs in all seacocks

Deck Features include:

- Teak decks, cabintop and cockpit - with teak deck strip under anchor chains
 - Stainless steel stemhead with two (2) bow rollers
 - Stainless steel bow pulpit - with custom teak seat
 - Stainless steel stern pushpit - top and bottom removable bars at gate
 - Stainless steel stanchions and lifelines
 - (6) Hull ports and (14) house ports - Opening portlights throughout
 - Tinted (Light gray) hatches on house and cabin tops - flush hatches on the forward deck
 - Deck prisms - (5) Rectangular and (4) round
 - Custom teak handrails port and starboard
 - 24-volt outlet in fwd dorade box with anchor light fitting
 - Raised toe rail with varnished teak cap integrated and integrated mooring chocks
 - (6) Rondal dorade 6" ventilators with stainless steel dorade guards and Rondal cowl vent closures
 - Custom crew's deck hatch - Has a folding, removable dodger and custom dorade box/spray guard
 - Custom deck lockers for fuel fills
 - Foredeck locker (with forepeak cowl vent and deck plate) storage for: (2) 80 cu/ft dive tanks
 - Custom aft starboard deck locker for shore power connections
 - Lazarette (with custom cowl vent and water trap) provides dedicated storage stem anchor and rode, parachute anchor and rode and drogue
-

COCKPIT



- Edson custom 30" pedestal with wheel steering
- Destroyer-type stainless steel wheel with teak rim and custom ebony stripe inlay and custom rim weather cover
- Recessed helm step

Cockpit features include:

- Varnished teak cockpit coamings have custom inlay and stainless steel trimmed winch pockets
- 24-volt outlet in cockpit coaming
- Custom locker/cooler for drinks
- Cockpit radar and computer screens angled toward helmsman
- Custom exterior ring for telephone system
- Custom stainless steel guard on cockpit portlight
- Opening portlight between cockpit and navigation station
- Cockpit seat locker lids have stainless steel gas lift assist
- The lazarette and cockpit utility lockers have shelves built-in to provide more efficient storage areas.
- Primary sheet hydraulic winch button with customized stainless steel covers near helmsman
- Push button cockpit controls

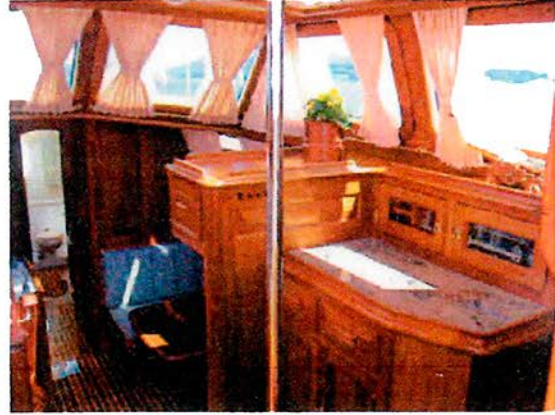
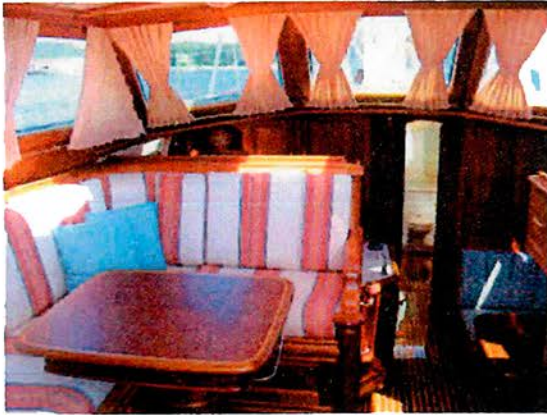
The Hinckley 70 has an all teak cockpit that is well laid out for short-handed sailing. Hydraulic genoa winches are within easy reach of the helmsman so the boat can be tacked single-handed if necessary. The cockpit dodger offers excellent protection, and visibility is unobscured from the helm. Sailing instruments are built into the forward coaming above the companionway.

- Starboard cockpit panel has tachometer, alarm panel, start and stop buttons and remote computer screen.
- Pedestal mounted custom compass.
- Port cockpit panel has VHF, autopilot control, Simrad IS-15 remote, Ockam control buttons, Fireboy remote, fog horn and bilge alarm lights.

More cockpit amenities:

- Cockpit table - Custom teak fixed with teak foot brace and fold-down forward end. Top has ebony stripe inlay around perimeter and lift-out accesses custom mug rack.
 - Dodger - Windowed forward and sides and aft elkhide covered grab bar
 - Bimini - fold-down, removable - zips to dodger
 - Custom boom mounted dining lights with dimmer
 - (All awnings are Sunbrella Tan and made by A&F Sails in Antigua)
 - Lunch awning - side curtains with 2 poles - zips to dodger
 - Foredeck awning with spreader bar
 - Middle (main) awning
 - Aft deck awning with spreader bar
 - Cockpit cushions - with bolt rope holders recessed into coaming
-

PILOTHOUSE



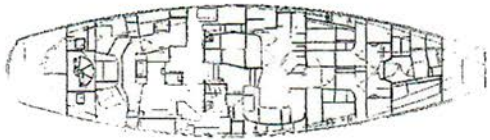
The enclosed pilothouse features large thermo-pane with low E-coating and light grey-tinted windows forward and outboard, and aft is a custom retractable window with screen to the cockpit. There are four-opening rooftop hatches.

The open-layout has a raised Salon with a U-shaped dinette to port and a custom liquor bar/work area to starboard.

Gloss varnished companionway steps include nonskid particles: steps aft lead to the cockpit and forward lead to the forward living accommodations below, that include the Main Salon, Galley, Work Area and Aft Master Cabin, Guest cabins and Crews Quarters.

- Custom Sapele mahogany pilothouse table with custom table top and electric up/down pedestal with removable center leaves, which store inside table.
- Custom liquor bar has a Jupirano Columbo stone countertop and includes drawers, ice chest, glass storage and bottle storage.
- Custom built-in cherry flower pot vase on shelf above bar
- Custom wine bottle storage rack in custom aft locker.

ACCOMMODATIONS INTRODUCTION



Overview:

The interior is finished with first quality hand-sawn cherry and satin-varnish is used throughout with raised paneling, custom detailing and in most areas, white V-grooved overheads with custom detailed

beams. Arched top, solid cherry, raised panel passage doors and solid maple dovetail drawer boxes with cherry raised panel fronts, and wooden slat air conditioning/heat ducts in all cabins except salon and pilothouse. Gloss varnished teak and holly sole with Toast Sunbrella cabin sole cover. Heads and Crew cabin are painted white with varnished cherry doors, vanity, drawer fronts and trim details and the showers are finished in Antique White Formica. Crew cabin has varnished cherry hull ceilings.

- Reverse-cycle heat/air conditioning with digital controller
- Espar heater - includes zone system and on/off switch at panel
- All deck hatches have Skyscreens.
- Track curtains for ports.
- Custom hull port inserts - exterior to match topsides, interior to match interior curtains.
- Throw pillows
- Fitted sheets and Lee cloths for all bunks
- Edelmissing coating on all fixtures and opening portlights.
- Storage space is enhanced with opening steps where possible.
- Kroon bascule bolts hold passage doors open and ajar.
- Custom sole storage hatches include custom vegetable bin.
- Extensive machinery noise insulation.
- Automatic lights in hanging lockers, refrigerator and freezer.
- Extra 110-volt outlets in cabin and below toe recess in galley and bar.
- Golden rod heaters in hanging lockers and linen lockers
- Owner's gun locker

ACCOMMODATIONS INTRODUCTION

Layout:

- Aft Master Cabin
 - 2 Guest Cabins
 - Crew Cabin
 - 4 Heads - four heads and three showers, one shared
 - 2 Salons - Main salon and Pilothouse salon
 - Galley
 - Nav Station
-

Entertainment Systems:

Includes (5) five Stereo receiver systems, (2) Satellite TV systems, VCR player and DVD:

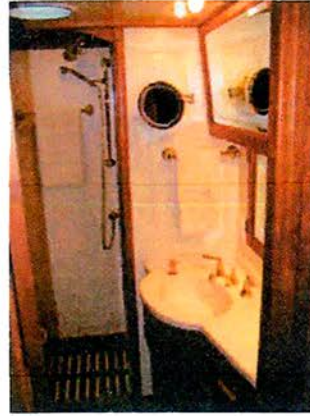
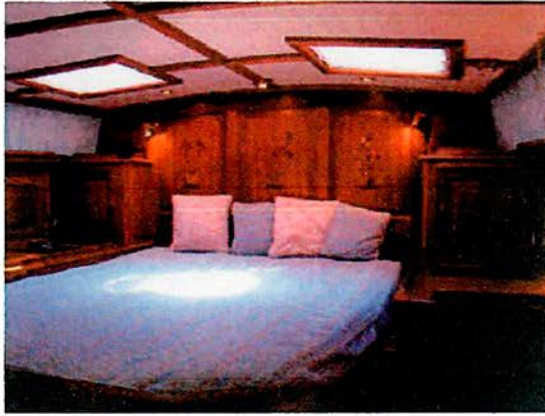
- Alpine CDA-9815 AM/FM, XM ready CD receiver (Main salon):
- (2) Alpine CHA-1204 CD changers
- (2) Alpine MRH-F254 amplifiers
- Speakers include:
- ADS 325IM speakers in main salon, galley and cockpit
- Sonance GR8 speakers in pilothouse
- Bose speakers in forward dorade box with volume control
- Sonance VC-51 volume controls for cockpit, dorade, main salon and pilothouse
- (2) Xantech infra-red remotes for main salon and cockpit
- Alpine CDE 7826 AM/FM stereo receiver (Crews Qtrs, Guest Cabins and Aft Master Cabin):
- ADS 325IM speakers
- ASI Sonance switches to switch speaker from stereo to TV - Aft cabin, Main salon and Stbd Guest cabin.
- KVH Track Vision G4 satellite TV system with (2) two RCA receivers: Aft-cabin and Main Salon
- Hitachi 17" flat-screen TV - Main Salon
- Hitachi 15" flat-screen TV - Aft Cabin
- Alpine DVA 7996 AM/FM receiver/DVD Player - Main Salon
- Audiovox VCR player
- Separate sound speakers

VESSEL WALKTHROUGH

Living Quarters Plan:

- AFT OWNER'S CABIN: Full-width and has an ensuite private Owner's Head with separate shower that is forward to port.
- WORK AREA: From the Aft Cabin forward starboard is a companionway to the Work Area that has a hidden washer/dryer and work bench space outboard and access to the engine room inboard.
- NAV STATION: Forward of the Work Area is the full sit-down Nav Station.
- PILOTHOUSE: Up companionway steps inboard/forward is the Pilothouse area with access to the cockpit or the forward accommodations.
- MAIN CABIN: Down companionway steps forward is the full-width Main Cabin area with the U-shaped Dining Salon starboard and full U-shaped Galley to port.
- GUEST ACCOMMODATIONS: Forward next are the Port and Starboard Guest Cabins that each sleep two. Starboard cabin has a double berth while the port cabin has a settee/single berth and a hinge-down upper berth. Each guest cabin has its own private head forward with a shared shower between.
- CREWS QUARTERS: Forward most with upper and lower single berths starboard and a head with shower offset forward port. Waterproof aft bulkhead with stainless steel ladder to separate access deck hatch.

MASTER SUITE (aft)



The full-width **Master Stateroom** has an ensuite Master Head:

This Stateroom features a centerline double berth with custom marquetry on aft bulkhead/headboard.

- There is an upholstered circular seat starboard and a forward center vanity with drawers on each side, pivoting stool and hidden vanity mirror.
- Plenty of storage is available in partitioned cedar-lined hanging lockers and in various lockers, drawers, alcoves, etc. throughout the cabin, including in a hidden Owner's safe with flex light.
- There are mirrors on the outside of four hanging locker doors.

This cabin also has:

- Dome and spot lighting in the white-coved ceiling and alcoves
- Opening portlights with curtains and overhead hatches.
- Custom nav display in the forward overhead bulkhead.
- Custom wood slat AC/heat duct and Hella fans
- Entertainment systems are also in the aft cabin.

Master Head is forward to port and includes a separate shower.

Features include:

- Cherry vanity and Bisque Corian countertop with molded sink and Jado diamond finished brass fixtures and Grohe soap dispensers.
- Over the vanity is: Roby lighting, large mirror with flush medicine cabinet below, and a mounted custom 3X magnifying mirror
- Fixture matching towel bars
- Fiberglass shower has Jado Diamond finished brass fixtures including fixed/telephone-style shower head, exhaust fan and a teak grate.
- Vacu-flush marine toilet plumbed to holding tank
- Dome and spot lighting, (2) 110-volt outlets, opening ports, overhead hatch, and vent fan.

WORK AREA/Companionway

Starboard forward from the Aft Cabin is a passageway to the Nav Station that includes a work area outboard and access to the engine room inboard. This area is beautifully finished with everything hidden behind varnished cherry locker doors.

- Hidden ASKO 2005 washer and ASKO 7305 dryer
 - Shelf and storage and chart lockers over washer/dryer area
 - Inboard engine room entry is sound insulated.
-

NAV STATION and ELECTRONIC/NAV EQUIPMENT



Next forward is the full **Navigation Station** outboard off-set aft. There is a portlight outboard and a Hella fan.

Opening, full nav desk has storage drawers, and flush instrumentation and integrated coffee mug holder. There are lockers and a double bookshelf is aft.

- Nav Seat: Recarro Atlantic stainless steel nav seat covered in Earth #2003 leather slides, rotates, and has electric 2" height adjustment
- 110-volt outlet
- Companionway steps inboard and forward lead up to the pilothouse.
- Nav/Electronics Equipment:
- Robertson AP300 Autopilot (2 cylinders) with KVH gyro-rate compass and main panel at Nav station and remote control
- Northstar 951XD differential GPS with 112 sensor and interfaced to computer, autopilot, plotter, Ockam instruments and radar.
- Raytheon C/70 GPS/Chartplotter
- Raytheon R40XX Radar (Nav station) also displays chartplotter - 4-kw antenna on mizzen mast
- Custom Sapele mahogany dining table with custom tabletop and electric up/down pedestal with removable center leaves, which store inside table.
- SEA 235 SSB with AT-120 tuner with remote and insulated backstay
- Icom 127 VHF with DSC - (hailer and fog speaker on mizzen mast) - Nav station
- Standard Horizon GX2355S VHF
- Satellite phone system with fax capabilities - Trane and Trane TT 3064A Mini AT system
- Panasonic KX-TG23-86 cordless 900-mhz phone/answer machine - Nav Station

Includes the Galley

Opposite the Main Salon, the fully-equipped Galley is U-shaped outboard and includes a hull port. The Galley is finished to include hidden appliances. Custom countertop aft of stove is Jupirano Columbo granite. The galley also has food warmer heat lamps.

Forward:

- Corian Bisque countertop has integral sink basins. Grohe Euro-Plus single central faucet fixture, instant hot water dispenser and a hand pump. Seagull water filter.
 - Dish towel rack on galley drop-front below sink
 - Storage areas and lockers are above and below the countertop
 - Trash compactor - MP 1055, 110-volt
 - Trash can area under sink
 - Knife rack drawer
 - Paper towel rack
-

Outboard:

- Force 10 gimballed polished stainless steel stove and oven with glass door and thermostat control and griddle and stainless steel hood. Stove slides inboard and locks at 3" and 7" locations.
- Microwave
- Food warmer
- Spice rack - tips out
- Second spice rack inside locker door
- Drawer below stove

Aft:

- Refrigerator/Freezer - two-door refrigerator access and single door freezer access - with sliding shelves.
- Custom lockers with tempered beveled glass doors and Lucite shelves to store wine and rocks glasses, mugs and beer steins. Accent lighting behind doors.

GUEST CABINS



Guest Cabins are next forward, port and starboard.

- Each cabin has a forward ensuite private head and access to a common stall shower.
- Guest Cabin berths have innerspring mattresses except upper berth in the port cabin is a foam mattress.

Starboard Guest Cabin:

This guest cabin has a double berth with storage under, shelves outboard and a hanging locker forward. Inboard is a vanity with large mirror over, spot lighting over vanity, storage drawers and locker, double bookshelf and entertainment system.

Port Guest Cabin:

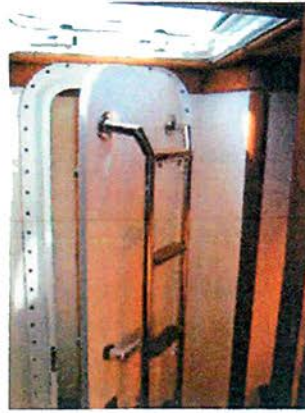
This cabin has a settee/berth outboard with a hinged pull-down berth over (foam mattress securely fastened to bunk). There is bookcase and locker storage over outboard. Inboard is a vanity with large mirror over, spot lighting over vanity, storage drawers and locker, double bookshelf and entertainment system.

Guest Heads and Shower:

Each cabin has a forward ensuite private head. Accessed from each head inboard is a common centerline shower.

- Vanity has a Bisque Corian countertop with molded sink and hot and cold pressure water
 - Jado Diamond finished brass fixtures include telephone style showerhead.
 - Grohe soap dispensers
 - Cantalupi Tony lights over head vanities
 - Vacuflush marine head plumbed to a holding tank
 - Storage
 - Shower exhaust fans
-

CREWS QUARTERS



Forwardmost, the **Crew's Quarters** has upper and lower berths to starboard with storage lockers to port including two hanging lockers.

Forward to port, off-center is a Head and Shower.

- Vanity with a Bisque Corian countertop with molded sink and has polished chrome fixtures, hot and cold pressure water and Grohe soap dispensers.
- The stall shower is finished in Antique White Formica and includes an exhaust fan.
- Vacu-flush marine head is plumbed to a holding tank.
- In addition are 3-towel bars.

This cabin is separated from the rest of the accommodations by a waterproof aft bulkhead door with a mounted ladder that enables access through a forward opening deck hatch, which also allows plenty of natural light and ventilation to accompany this cabin.

- Princess phone, nav instrument display, and stereo system.

ELECTRICAL SYSTEM:

24-Volt System:

- 24-volt engine start:
- All Lifeline batteries
- (2) State 4-D 12-volt start batteries
- 12-volt gel-cell Navigation Instrument battery constantly fed from 24-volt converter.
- 24-volt start: for Generator

12-volt, 24-volt and shore charging 240-volt systems:

12-Volt systems:

- Separate 12-volt systems for starting, accessories, and electronics each with independent 12-volt batteries. Amp hour monitors. Deck electrical box with water tight plugs.
 - Parallel 12-volt switch for separate generator & engine start batteries.
-

MECHANICAL EQUIPMENT



1998 Cummins 220 hp 6 BTA 5.9 M1 FWC diesel engine with Twin Disc MG 5050A 2.04:1 reduction gear, Aquamet 2.25" stainless steel shaft with spurs and 3-blade "classic" Max Prop.

- Double Racor fuel filter with vacuum gauges, water sensors, drain petcock and signal on alarm panel.
- Remote 12-volt oil transfer pump, for easy oil changes.
- Engine start at helm with emergency start in engine room
- Hydraulic Lewmar retractable bow thruster with control at helm
- Custom Staalart wheel and clutch assembly
- Automatic bilge pump with audio/visual alarm at helm & crew's quarters and nav station.
- Hydraulic centerboard with manual Navtec 7 system back-up
- Electric fuel priming pump for main engine and generator
- Two (2) 24,000 BTU reverse-cycle air conditioning units
- Paragon Jr. domestic pressure water pump
- Second Par back-up pressure water pump
- Y-valve for emergency bilge pump use of engine sea water pump
- Forepeak bilge pump
- All Rondal forward hatches have Rondal gas spring openers
- Separate forward water tank - Four (4) separate water tanks

The walk-in engine room area is between the Aft Cabin and the Main Cabin below the pilothouse. All mechanical and hydraulic areas are finished with plenty of sound insulation. There is anodized aluminum grating as flooring.

- (8) Overhead lights
- Fans - Engine intake, exhaust and circulation fans on separate switches
- All system lines are color-coded and marked with flow direction arrows.

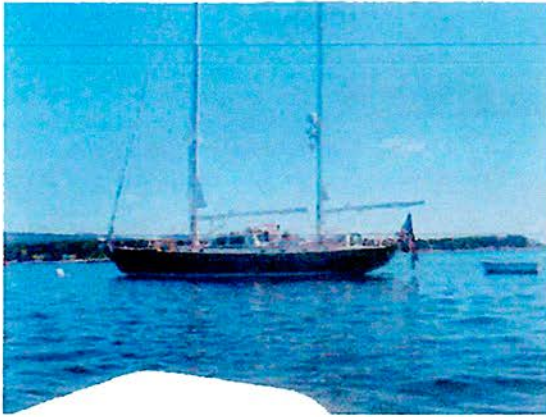
Engine room monitors include:

- Holding tanks and duplicate full generator gauges
- All hydraulic quick-disconnect connections on deck and mast
- Green lights on breaker panel indicate when pumps are running
- Saltwater flow meter to engine and generator with alarms to helm, crew cabin and nav station
- TEFC motor pump
- Engine start panel with gauges

On deck:

- Saltwater deck wash pump
 - Freshwater deck wash with Paragon Sr. pump - spigots in forepeak locker and portside pushpit
 - Deck showers (2) with mixing valves - Stbd gate and port side stem pulpit
 - LP gas control panel
 - (2) Hot water heaters
 - Sea Recovery 1500-gallons/day watermaker with UV sterilizer plumbed to two tanks
 - Propane hook-up for BBQ
 - Automatic Fireboy Halon fire extinguisher - automatic shut-down of main engine, generator and exhaust fan with pedestal manual override and manual release lever outside engine room door.
 - Stainless steel water tanks
-

RIGGING AND SAILS



Hydraulic stoway, three-spreader cutter/ketch rig.

- Hall Spars carbon fiber hydraulic stoway main and mizzen masts with preventer in booms. Main mast has a tromp d'oeil cherry mast bury. There are 2 mast steps at top of main and mizzen masts and 4-steps below the boom on the main.
- Reckmann RF90-3 furling headstay systems and
- Hall mast hardware includes hydraulic outhaul system and spinlock XK stoppers for main halyard while a second halyard has starboard stand-up block with 2XK spinlocks and cleat.
- Pressurized Navtec system with Commander function
- Polished stainless steel main and mizzen vang and backstay cylinder and panel
- Carbon fiber spinnaker pole - with forward end elkhide covered is stored on mast
- All Rondal deck hardware - including 6 removable padeyes and 4 blocks for outboard sheeting of genoa and staysail
- Main mast lights: Red/green nav lights, spreader lights, and blue/white "owner-absent" light.
- Mizzen: Spreader light is mast mounted

Winches:

Winches include Lewmar primary winches located aft in the cockpit, convenient to the helm for "shorthand" sailing.

All Lewmar winches:

- (2) #88 3-speed primaries
 - (2) #77 hydraulic secondaries
 - (2) #66 manual halyard winches foredeck
 - (1) #66 hydraulic main sail cockpit winches
 - (1) #58 COST Lewmar all purpose hydraulic foredeck winch
-
- **SAILS:** (All North)
 - Main - 12/2011, Stoway Spectra furling, with 4-vertical battens, Tuffseam coating and clew block
 - Mizzen - 2003, Stoway Spectra furling, with 4-vertical battens, Tuffseam coating and clew block
 - 135% #2 Genoa - 12/2011, Spectra UV leech and foot with rope reefing pad
 - 100% Yankee - 2004, Spectra high-clewed UV leech rope reefing pad
 - Forestaysail -1997, 10.8-oz NorDac
 - Gennaker -1997, True radial, 1.5-oz Norlam, Snuffer Plus
 - Mizzen staysail - 1997, 1-oz. poly, with Snuffer Plus
-

ADDITIONAL EQUIPMENT



Ground Tackle:

- Lewmar electric windlass - Deck control with remote in cockpit
- 105# CQR stainless steel anchor in HRH stainless steel bow roller + 375' X 1/2" stainless steel chain
- Fortress FX-125 storm anchor - stored in forepeak
- Fortress FX-55 stem anchor with 25' x 1/2" stainless steel chain - dedicated
- Sea anchor with 250' Paratech line - lazarette stowed with custom storage shelf and lashing
- Drogue with 25' x 1/2" stainless steel chain and 350' rode - lazarette stowed
- Devil's claw.

• EQUIPMENT:

- Clock and barometer
- Ensign staff
- Fixed masthead burgees on carbon fiber staffs on main and mizzen
- Boom lights - (1) main and (2) mizzen, separate on dimmers
- Multi-plex 8-ft. folding, carbon fiber passerelle with four (4) stanchions, lifting bridle and cover.
- Fenders
- (2) Fenderboards - custom
- Docklines (4)
- Stainless steel swim-forepeak-boarding ladder.
- (2) 80 cu/ft dive tanks (custom storage in foredeck locker)
- Holder - on starboard stem pulpit
- Lifesling
- Lensref radar reflector
- (2) Liferings with mounting brackets
- MOM 9
- (5) Fire extinguishers
- Avon 8-man liferaft in canister, deck mounted with cover
- Delivery covers - Linen Sunbrella
- Custom weather covers for flag and cockpit steering rim
- Outboard mounting bracket on stem pushpit.

Does not convey:

- Cannon, artwork and sculptures, Octant.
- Chrome plated bronze-step plate on bulwark cap at gates port and starboard, engraved "WINDCREST".

REMARKS

WINDCREST (name reserved). With her raised-panel cherry interior, traditional deck beam treatment, custom marquetry, this vessel looks and feels like a fine yacht of the golden era. Hidden throughout is the latest mechanical, electrical equipment yielding a yacht of modern comfort and luxury. Built for an experienced and discriminating family, she has been captain/Hinckley yard maintained to impeccable standards.

Offered for the first time, she is a showpiece among Hinckley and a true Bluewater yacht fully equipped for the serious sailor.

Disclaimer

Specifications are provided for informational purposes only. Data was obtained from sources believed reliable but is not guaranteed by owner or brokers. Buyer assumes responsibility to verify all speeds, capacities, consumptions and other measurements contained herein and otherwise provide and agrees to instruct his agent/s to confirm such details prior to purchase. Vessel subject to prior sale, price and inventory changes and withdrawal from market without notice.
